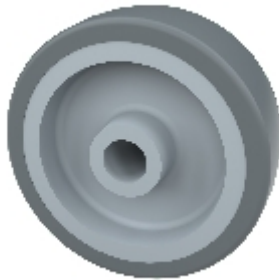







Räder:

31G-12-29



Technische Daten

Durchmesser		75 mm
Laufflächenbreite		25 mm
Nabenlänge		28,8 mm
Achsbohrung		12 mm
Tragkraft		60 kg

Rad

Polypropylen-Radkörper

thermoplastische Bandage (TPE, Shore A 87)

Gleitlager

nicht ausölend